



# **Voluntary Repatriation Statistical Update**

**Statistical overview of UNHCR assisted Voluntary  
Repatriation Returns from Pakistan**

**01 March to 31 December 2004**

**Data Management Unit  
Branch Office Islamabad**

<b>ABOUT THE CONTENTS OF THIS REPORT</b> .....	<b>2</b>
<b>SUMMARY OF REPATRIATION TRENDS</b> .....	<b>3</b>
<b>1. OVERALL NUMBER OF RETURNS</b> .....	<b>5</b>
<b>2. RETURNS PER MONTH</b> .....	<b>6</b>
<b>3. IRIS RECOGNITION PROCESSING STATISTICS*</b> .....	<b>9</b>
<b>4. CAMPS VS. OUTSIDE CAMPS</b> .....	<b>10</b>
<b>5. ETHNICITY AND GENDER</b> .....	<b>12</b>
<b>6. ETHNICITY AND PROVINCE OF INTENDED FINAL DESTINATION</b> .....	<b>16</b>
<b>7. PROVINCE OF DEPARTURE AND RETURN</b> .....	<b>18</b>
<b>8. MONTHLY AGE BREAKDOWN OF RETURNEES</b> .....	<b>21</b>
<b>9. EDUCATION</b> .....	<b>24</b>
<b>10. OCCUPATIONAL GROUPS FOR RETURNEES BY AGE</b> .....	<b>25</b>
<b>11. OCCUPATIONAL GROUPS OF TOTAL RETURNEES AND IN PERCENT TO AGE OVER 18</b> .....	<b>26</b>
<b>12. FAMILY SIZE AND COMPOSITION</b> .....	<b>27</b>
<b>13. YEAR SPENT IN PAKISTAN</b> .....	<b>28</b>

## **About the contents of this report**

All the figures shown in this report refer to Afghans registered in Pakistan by UNHCR for the Voluntary Repatriation Operation in 2004. The total number of returnees from Pakistan in 2003 was 343,074, which was less than the expected figure of 500,000. However, total repatriation in 2003 was much higher than anticipated 200,000 refugees who indicated their consent to repatriate in 2003 during winter survey 2002. In 2002, UNHCR registered 1.56 million returns not counting the spontaneous (not assisted) returns. Repatriation continued throughout the winter, stopping only for the month of February, and resuming on 9 March 2003 till November 20<sup>th</sup> 2003. Similarly, repatriation of Afghan Refugees from Pakistan was resumed in March 2004 and so far till 31<sup>st</sup> December 2004, 67,023 families comprising of 383,598 individuals have repatriated.

All refugees approaching UNHCR for return assistance are verified by repatriation staff, to determine i) whether their intent to return is genuine and voluntary; ii) whether their family composition is genuine; and iii) whether they are being registered and processed by UNHCR for the first time (since the start of the operation on 1 March 2002).

During immediate daily reporting, one Voluntary Repatriation Form (VRF) is counted as one “family”. This includes, however, single persons registering for return, which does not actually constitute a “family.” As UNHCR registered some 1,150 single persons in 2003 and some 277 individuals in 2004 so far, the total number of “families” returned this year was actually 66,746 (as opposed to 67,023 which appear in this report).

In addition to assisted returns, spontaneous returns also occurred in 2004, i.e., those Afghans repatriating without seeking UNHCR’s assistance. UNHCR has been monitoring these returns at official border crossings only (Torkham border crossing in NWFP and Chaman border crossing in Balochistan). According to border monitors 1,701 families/10,210 Afghans returned spontaneously through Torkham, in 2004. Although monitored, these returns are not included in this statistical update.

Figures shown in this report are taken from the UNHCR repatriation databases maintained at sub offices Quetta and Peshawar, and subsequently consolidated in the central database at Branch office Islamabad. The information contained in the report is the best information made available up to the date the report is being compiled – 31<sup>st</sup> December 2004.

Full information about assisted repatriating families is recorded manually at first in the field during the process of pre-registration and then finally validated upon departure at the Iris Validation Center (IVCs). VRFs are then forwarded to the sub offices for further data processing. Because of this process of data transfer, delays can occur and hence result in discrepancies. In other words, should repatriation staff at IVCs be prevented in transferring VRFs (because of security reasons, for example) to their sub-offices, the total number of returns recorded may in fact be lower than what was actually registered on any given day.

## **Summary of Repatriation Trends**

### **Returns by province of registration in Pakistan**

- The following is a breakdown by province of registration in 2004: 49 percent from NWFP, 9 percent from Sindh, 9 percent from the Punjab & Islamabad and 33 percent from Balochistan. Compared to the repatriation trends of the 2003 till November, percentages of return this year increased in March by 91 percent, April by 32 percent, August and November by 62 and 21 percent respectively. However, repatriation this year has decrease in May, June, July and October with (1 %, 58 %, 53 % and 295%) respectively in comparison to last year.
- During the month of November, only 4,892 individuals repatriated due to temporary suspension of Voluntary repatriation during Eid holidays.
- The total number of returnees from 01 March to 31 December 2004 is 383,598.
- Though the repatriation season started rapidly in March with geo-political uncertainties in the region, the number of returnees increased exponentially in April reaching the peak in May and starts of June and then slows down before the mid of June and declined further till the mid of July. The repatriation trends took a big steep in the end of July and leaped further during the month of August. However, the rate of return went down in the end of August and continued to go down till December.
- 
- During the month of October and November, the repatriation figures dropped down from 25,000 (sep) to 5000 individuals.

### **Returns from camps and outside of camps**

In 2002, returns from non-camps (urban) comprised 82 percent of the total, with those from camps making up only 18 percent. In 2004, camp returns comprised 43 percent of the total returns, which is higher than 2003 (26 %) and much higher than 2002 (18 %). The percentage of returns has increased from Camps due to the reason that UNHCR and the Government of Pakistan announced in July that all assistance in the “new” camps would end on 1 September. It was difficult and expensive to provide aid in the camps, mainly located in isolated spots near the border, and there have also been increasing security concerns because of unrest in neighboring areas of Afghanistan.

### **Ethnicity**

- Seventy one percent of the returnees in 2004 are ethnic Pashtuns – higher than in 2003 (61%) and 17 percent ethnic Tajiks – lower than in 2003 (25%). The return trends in percent for the other ethnic groups remain more or less similar to last year's. There was a decrease in the percentage of Pashtuns among the Afghans repatriating in June this year, however, the number of Pashtuns increased considerably during the month August but descended in the end of August and continue to decrease up till mid of September.
- Pashtuns makes 54 percent of returns to Kabul, 89 percent to Nangarhar, 58 percent to Kunduz and 53 percent to Ghazni. Tajiks make 37 percent of returns to Kabul, 48 percent to Baghlan, 53 percent to Parwan.

### **Returns by area of origin and intended final destination in Afghanistan**

- As predicted through UNHCR's survey of December 2002, the majority returnees have gone to Kabul (21%), Nangarhar (13%), Ghazni (10%) and Kanduz(9%) followed by Baghlan and

Kandahar (7 percent each), Paktya together with Hilmand sharing 4 percent each. This trend is symptomatic of the lack of “pull factors” in the non-urban areas of Afghanistan and underscores the necessity to enhance/increase infrastructure development and the provision of basic services in these areas.

- Up till August this year, no Afghan Refugees had gone to Ghor. However, in September a family comprising of three members went to the western province.
- NWFP make 73 percent of the returns to Kabul, 89 percent in Nangarhar and Logar. Over 23 percent of the returns to Kunduz and 35 percent to Baghlan, over 90 percent to Farah and 65 percent to Badghis.

## Age

- Median age of the Afghan returnee population in 2002, 2003 and 2004 stands at around 12 years.<sup>1</sup> The age breakdown of those under 5, 5 to 12, 13 to 18 and 18 and above is almost identical in 2002 and 2003. In 2004, returnees between the ages of 5 and 18 (the age group attending primary and secondary education) make up 38 percent of the total return population

## Education

- The number of returnee children who were attending primary and secondary school in Pakistan stands at 8 Percent and 1 Percent respectively out of the total 2004 return population. 32 percent of the age group 5 to 12 was still attending primary school, whereas 9 percent of the age group 13 to 18 was attending the secondary school. The lower percentage of children returning to secondary school corroborates the findings of the survey, which indicated that the vast majority of children attending secondary school would prefer not to return this year. 10 Percent of the age group over 13 has completed primary education and 6 Percent of the age group over 18 have completed secondary education. Only 0.1 Percent of those over 18 have a university degree.

## Occupation

- The trend of high numbers of professionals and skilled refugees returning to Kabul and Nangarhar continues. An increase in the number of engineers, education and medical services personnel have also been evidenced in 2004, which reflects an increased availability of job opportunities in urban areas for those skilled/professionally labor. In contrast, there has not been an increase in the number returning non-skilled workers (who make up the majority of Pakistan’s Afghan refugee population) which can indicate that they are unable to find income generation opportunities in Afghanistan at this point of time.

## IRIS Verification

The rate of persons being recognized by the Iris Recognition Database is 1 percent (out of total number of refugees processed) or 1.3 percent out of those that have undergone the test (SCE excluding children and others that do not undergo the test). In other words, 100 out 10,000 persons of age 6 and over (previously 12 and over) are being identified by the Iris Recognition Database as people that have been registered for assistance in the past. The age limit for the Iris Recognition test was lowered to 6 years on 18 July 2003.

---

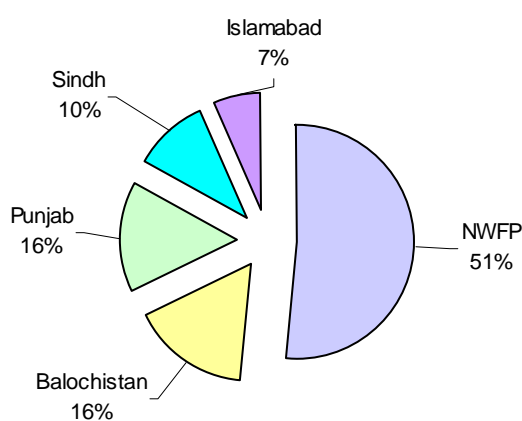
<sup>1</sup> Median age of 12 means that half of the population is 12 and under, the other half above 12

<sup>2</sup> Per 10,000 people

## 1. OVERALL NUMBER OF RETURNS

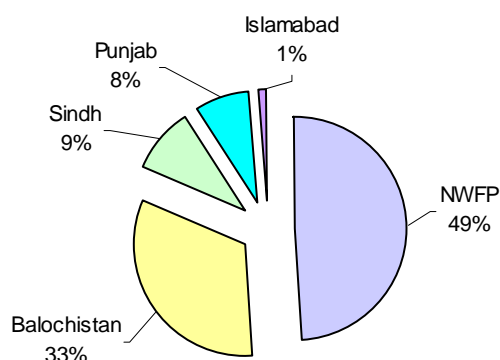
➤ Number of returns by province of registration in Pakistan (01 March 2002 – 31 December 2004)

Province	No. of Individuals				%
	2002	2003	2004	Grand Total	
NWFP	807,869	184,018	187,859	1,179,746	51%
Balochistan	163,503	76,696	124,777	364,976	16%
Punjab	289,667	39,776	30,567	360,010	16%
Sindh	166,625	35,409	36,027	238,061	10%
Islamabad	137,431	7,175	4,368	148,974	7%
<b>Grand Total</b>	<b>1,565,095</b>	<b>343,074</b>	<b>383,598</b>	<b>2,291,767</b>	<b>100%</b>



➤ Number of returns by province of registration in Pakistan (01 March – 31 December 2004)

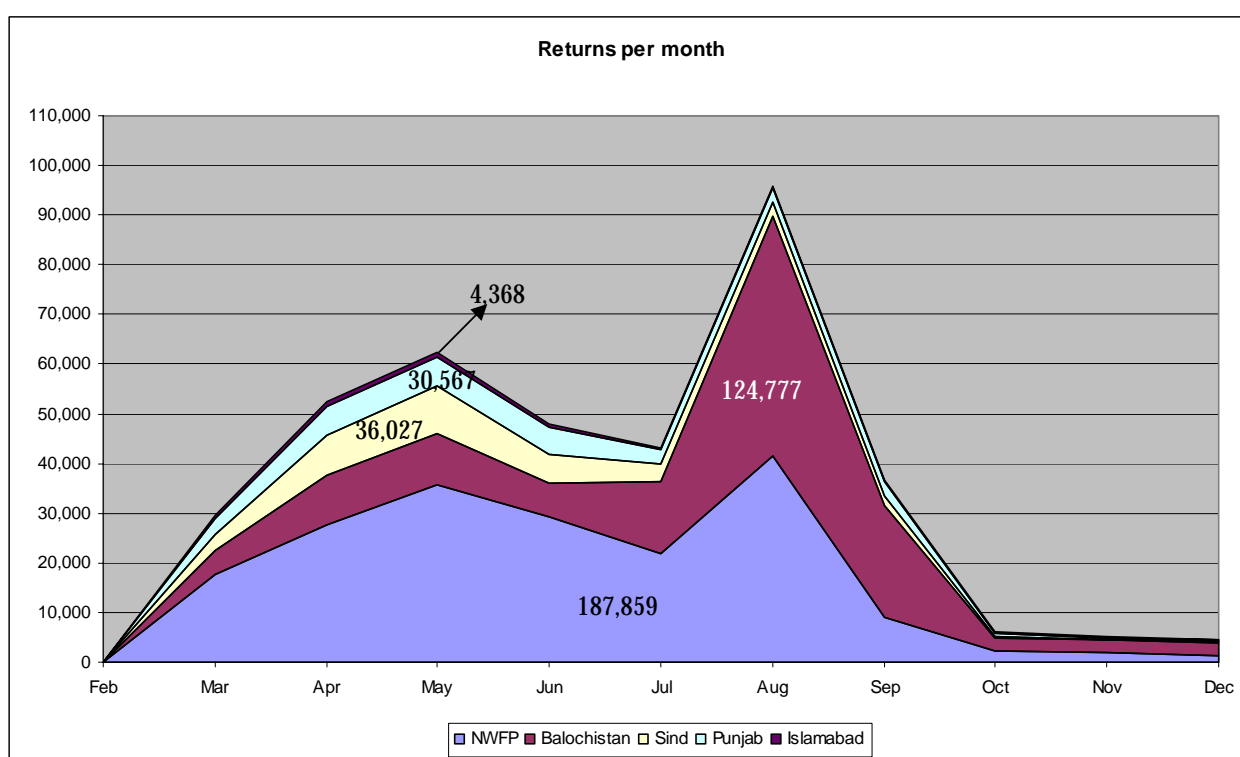
Province	Families	Persons	In percent
NWFP	32,342	187,859	49
Balochistan	21,589	124,777	33
Sindh	6,934	36,027	9
Punjab	5,385	30,567	8
Islamabad	773	4,368	1
<b>Grand total</b>	<b>67,023</b>	<b>383,598</b>	<b>100</b>



## 2. RETURNS PER MONTH

➤ **Monthly return figures by province of registration in Pakistan (01 March – 31 December 2004)**

Province	March	April	May	June	July	August	Sep	Oct	Nov	Dec	Total
NWFP	17,836	27,815	35,601	29,146	21,761	41,357	8,906	2,183	1,881	1,373	187,859
Balochistan	4,568	9,803	10,352	6,811	14,731	48,299	22,488	2,729	2,608	2,388	124,777
Sindh	3,321	8,051	9,575	5,943	3,341	2,896	2,060	384	146	310	36,027
Punjab	3,359	5,904	5,914	5,292	2,999	2,905	3,051	587	281	275	30,567
Islamabad	653	1,001	898	748	317	329	208	69	102	43	4,368
<b>Grand total</b>	<b>29,737</b>	<b>52,574</b>	<b>62,340</b>	<b>47,940</b>	<b>43,149</b>	<b>95,786</b>	<b>36,713</b>	<b>5,952</b>	<b>5,018</b>	<b>4,389</b>	<b>383,598</b>

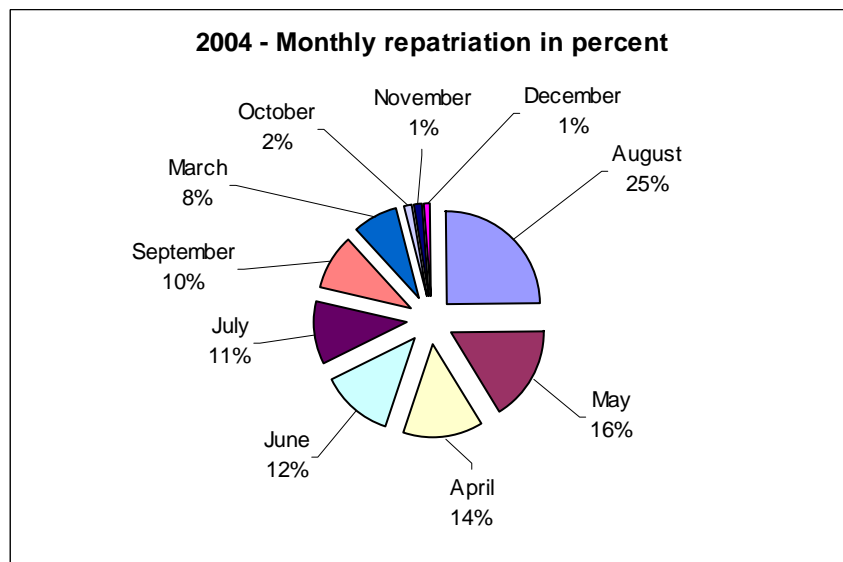


➤ **Monthly** breakdown of Afghan Refugees repatriated from Pakistan

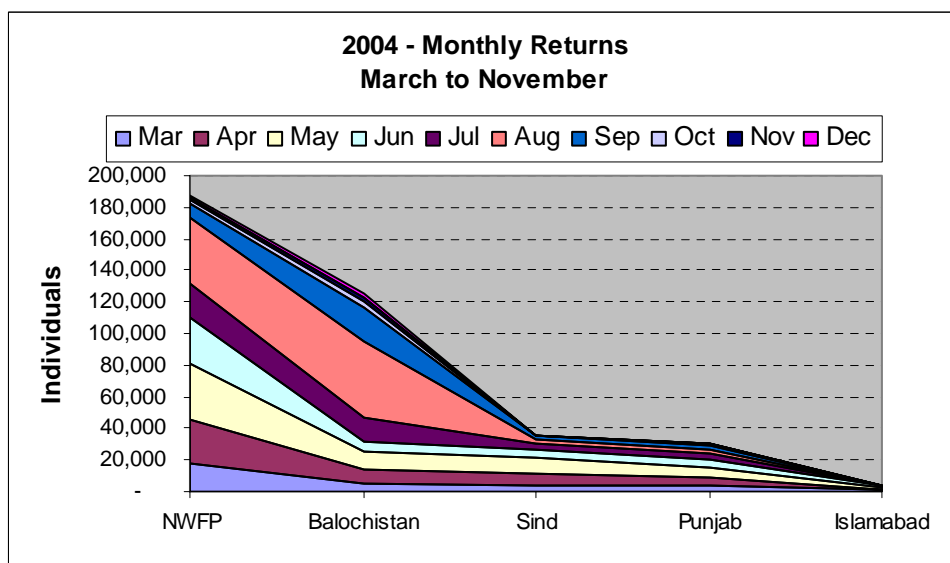
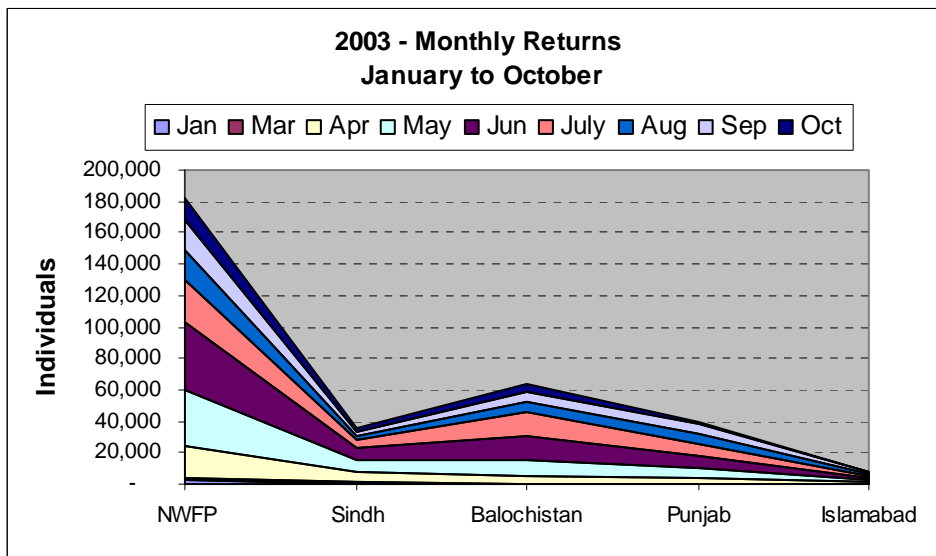
Month	Individuals	Percent
August	95,786	25%
May	62,340	16%
April	52,574	14%
June	47,940	12%
July	43,149	11%
September	36,713	10%
March	29,737	8%
October	5,952	2%
November	5,018	1%
December	4,389	1%
<b>Total</b>	<b>383,598</b>	<b>100%</b>



➤ **Monthly** percentage of Afghan Refugees repatriated from Pakistan



➤ **Monthly return figures by province of registration in Pakistan in comparison to 2003**



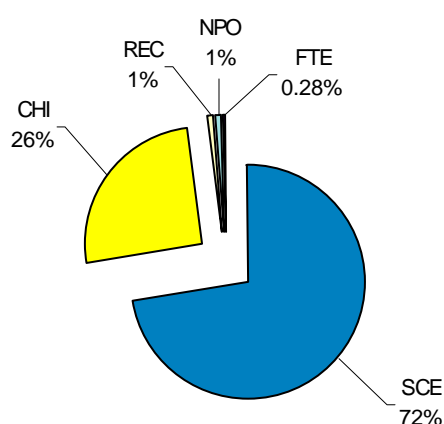
➤ **Percentage increase / decrease of Afghan Returns in Comparison of 2003 and 2004**

Year	Jan	Mar	Apr	May	Jun	July	Aug	Sep	Oct	Nov	Dec
2003	2,863	2,682	35,808	62,695	75,769	55,404	34,982	34,536	23,497	3,842	0
2004	0	29,737	52,574	62,340	47,940	43,149	95,786	36,713	5,952	5,018	4,389
% increase/ decrease		+1009%	+47%	-1%	-37%	-22%	+174%	+6%	-75%	+31%	

### 3. IRIS RECOGNITION PROCESSING STATISTICS\*

➤ **Individuals** undergoing IRIS verification Weekly and Cumulative figures. **(01 March - 31 December 2004)**

IVC (Iris Validation Center/s)	Cumulative total (01 March - 31 December 2004)				
	SCE	CHI	FTE	NPO	REC
<b>NWFP</b>	185,539	59,631	920	1,634	2,385
<b>Balochistan</b>	93,806	40,452	173	1,128	919
<b>Grand total</b>	<b>279,345</b>	<b>100,083</b>	<b>1,093</b>	<b>2,762</b>	<b>3,304</b>



The rate of persons being recognized by the Iris Recognition Database is 1 percent (out of total number of refugees processed) or 1.3 percent out of those that have undergone the test (SCE excluding children and others that do not undergo the test). In other words, 100 out of 10,000 persons of age 6 and over (previously 12 and over) are being identified by the Iris Recognition Database as people that have been registered for assistance in the past. The age limit for the Iris Recognition test was lowered to 6 years on 18 July 2003.

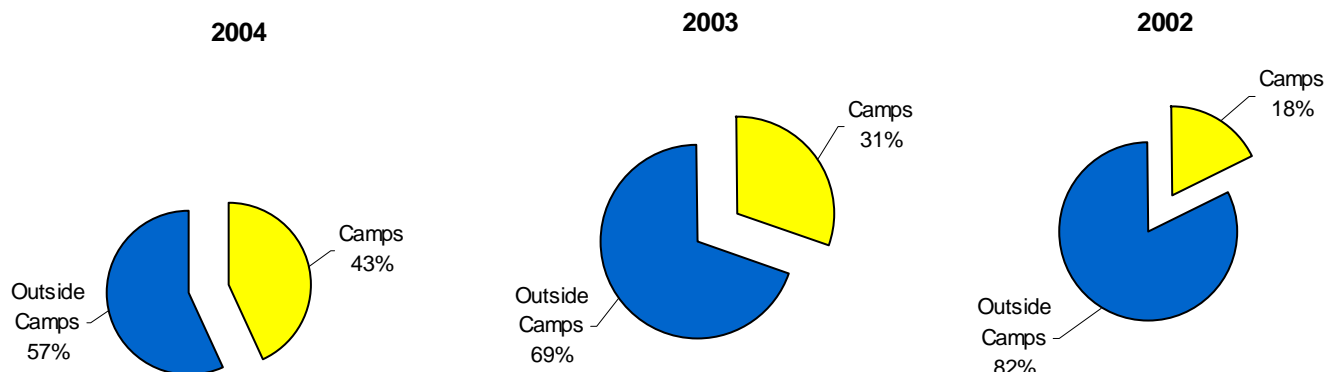
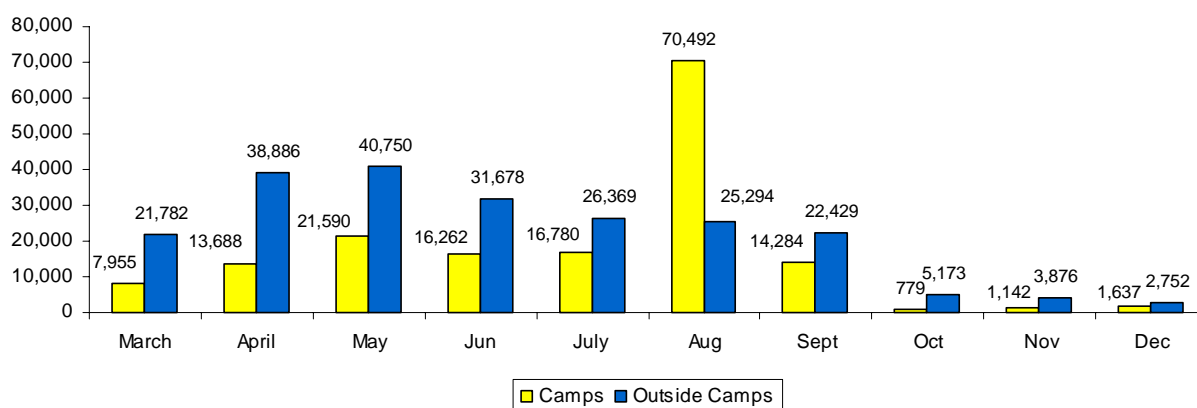
\*

<b>Code</b>	<b>Description</b>
<b>SCE</b>	Successfully enrolled, i.e. refugees passed the IRIS test, get enrolled in the database for the first time.
<b>CHI</b>	Children younger than 6 do not undergo the IRIS test except randomly.
<b>FTE</b>	Failure to enroll. This is not a rejection. A refugee may not undergo the IRIS test because of medical reasons, e.g., blind or extreme cataracts.
<b>NPO</b>	Not performed for other reasons i.e. women may choose to forego the test for cultural reasons, in which case they are exempt from the cash grant.
<b>REC</b>	Recognized. The IRIS technology recognized the individual's iris. This is treated as attempt to apply for assistance twice.

## 4. CAMPS vs. OUTSIDE CAMPS

➤ Monthly return figures from camps vs. non-camps (01 March – 31 December 2004)

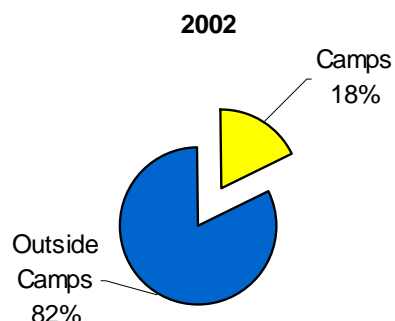
Camps/ Out camps	March	April	May	Jun	July	Aug	Sept	Oct	Nov	Dec	Total
Camps	7,955	13,688	21,590	16,262	16,780	70,492	14,284	779	1,142	1,637	164,609
Outside Camps	21,782	38,886	40,750	31,678	26,369	25,294	22,429	5,173	3,876	2,752	218,989
<b>Total</b>	<b>29,737</b>	<b>52,574</b>	<b>62,340</b>	<b>47,940</b>	<b>43,149</b>	<b>95,786</b>	<b>36,713</b>	<b>5,952</b>	<b>5,018</b>	<b>4,389</b>	<b>383,598</b>



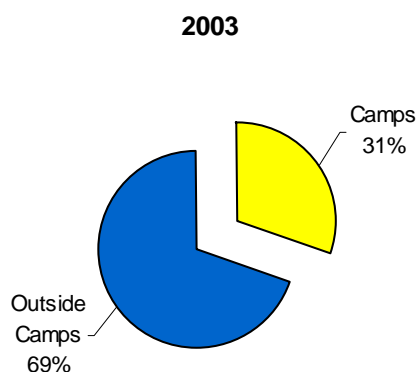
In 2002, returns from non-camps (urban) comprised 82 percent of the total, with those from camps making up only 18 percent. In 2004, camp returns comprised 43 percent of the total returns, which is higher than 2003 (26 %) and much higher than 2002 (18 %). The percentage of returns has increased from Camps due to the reason that UNHCR and the Government of Pakistan announced in July that all assistance in the “new” camps would end on 1 September. It was difficult and expensive to provide aid in the camps, mainly located in isolated spots near the border, and there have also been increasing security concerns because of unrest in neighboring areas of Afghanistan

### REPATRIATION FROM CAMPS & OUTSIDE CAMPS IN 2002, 2003 & 2004 BY PROVINCE OF RESIDENCE IN PAKISTAN

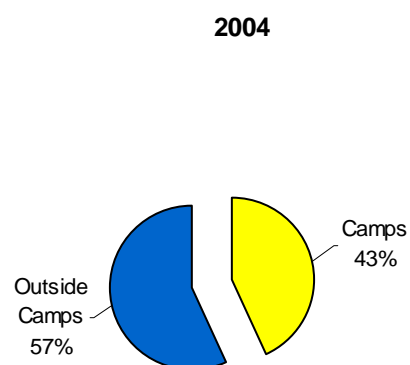
Province	Year 2002		Total
	Camps	Outside Camps	
	Ind	Ind	
NWFP	246,504	561,365	<b>807,869</b>
Balochistan	35,970	127,533	<b>163,503</b>
Sindh	-	166,625	<b>166,625</b>
Punjab	-	289,667	<b>289,667</b>
Islamabad	-	137,431	<b>137,431</b>
<b>Grand Total</b>	<b>282,474</b>	<b>1,282,621</b>	<b>1,565,095</b>



Province	Year 2003		Total
	Camps	Outside Camps	
	Ind	Ind	
NWFP	67,548	116,470	<b>184,018</b>
Balochistan	33,151	43,545	<b>76,696</b>
Sindh	0	35,409	<b>35,409</b>
Punjab	535	39,241	<b>39,776</b>
Islamabad	0	7,175	<b>7,175</b>
<b>Grand Total</b>	<b>101,234</b>	<b>241,840</b>	<b>343,074</b>



Province	Year 2004		Total
	Camps	Outside Camps	
	Ind	Ind	
NWFP	108,890	78,969	<b>187,859</b>
Balochistan	52,566	72,211	<b>124,777</b>
Sindh	0	36,027	<b>36,027</b>
Punjab	3,153	27,414	<b>30,567</b>
Islamabad	0	4,368	<b>4,368</b>
<b>Grand Total</b>	<b>164,609</b>	<b>218,989</b>	<b>383,598</b>

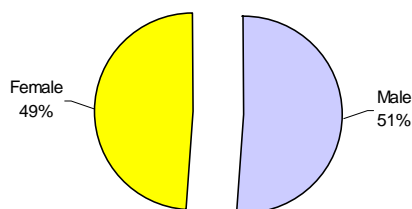


## 5. ETHNICITY AND GENDER

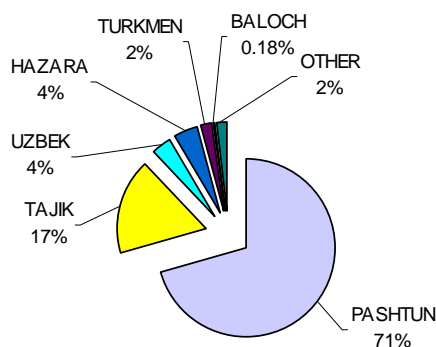
### ➤ Cumulative breakdown by ethnicity (01 March – 31 December 2004)

Ethnicity	Mar	Apr	May	June	July	Aug	Sept	Oct	Nov	Dec	Ind	F	M	F %	M %
PASHTUN	20,126	34,727	38,190	29,827	30,145	75,924	29,648	4,429	4,024	3,552	270,592	133,308	137,284	49%	51%
TAJIK	6,514	11,273	14,834	11,866	7,303	8,478	3,113	690	596	450	65,117	32,269	32,848	50%	50%
UZBEK	873	1,736	4,652	2,073	1,856	3,124	1,201	91	127	92	15,825	7,795	8,030	49%	51%
HAZARA	899	2,725	2,434	1,225	1,425	4,781	417	200	137	133	14,376	7,199	7,177	50%	50%
TURKMEN	315	710	946	1,637	802	1,423	1,765	308	65	118	8,089	4,110	3,979	51%	49%
BALUCH	53	107	145	69	77	119	34	41	15	9	669	343	326	51%	49%
OTHER	957	1,296	1,139	1,243	1,541	1,937	535	193	54	35	8,930	4,459	4,471	50%	50%
<b>Grand total</b>	<b>29,737</b>	<b>52,574</b>	<b>62,340</b>	<b>47,940</b>	<b>43,149</b>	<b>95,786</b>	<b>36,713</b>	<b>5,952</b>	<b>5,018</b>	<b>4,389</b>	<b>383,598</b>	<b>189,483</b>	<b>194,115</b>	<b>49%</b>	<b>51%</b>

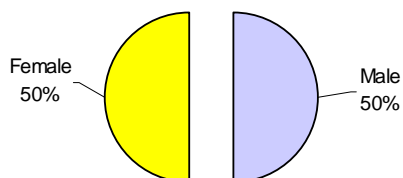
2004 - Gender Percentage



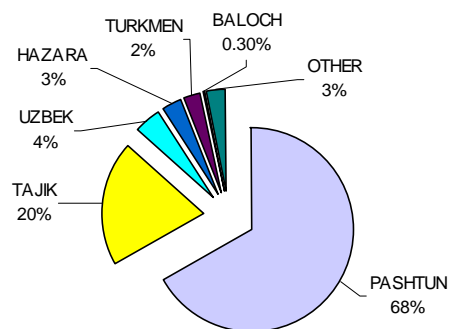
2004 - Ethnicity in Percent



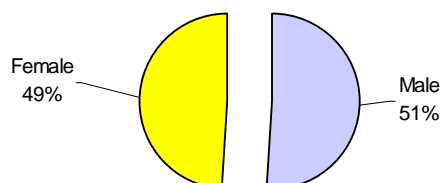
2003 - Gender Percentage



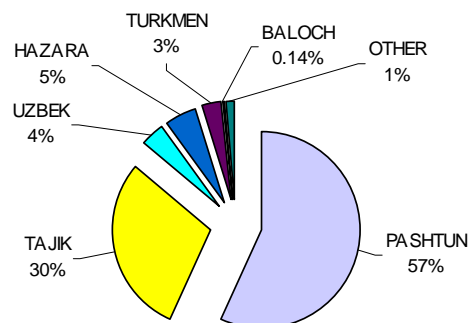
2003 - Ethnicity in Percent



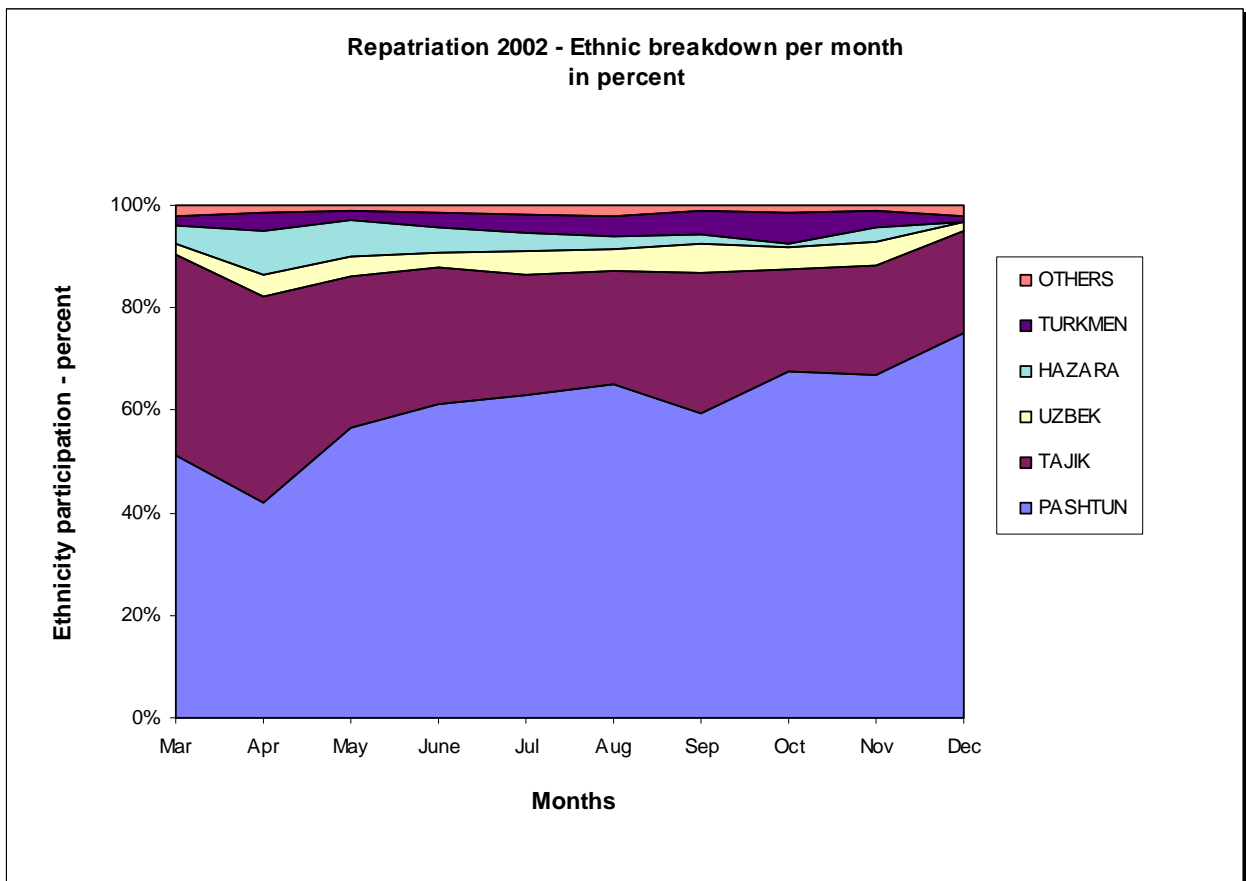
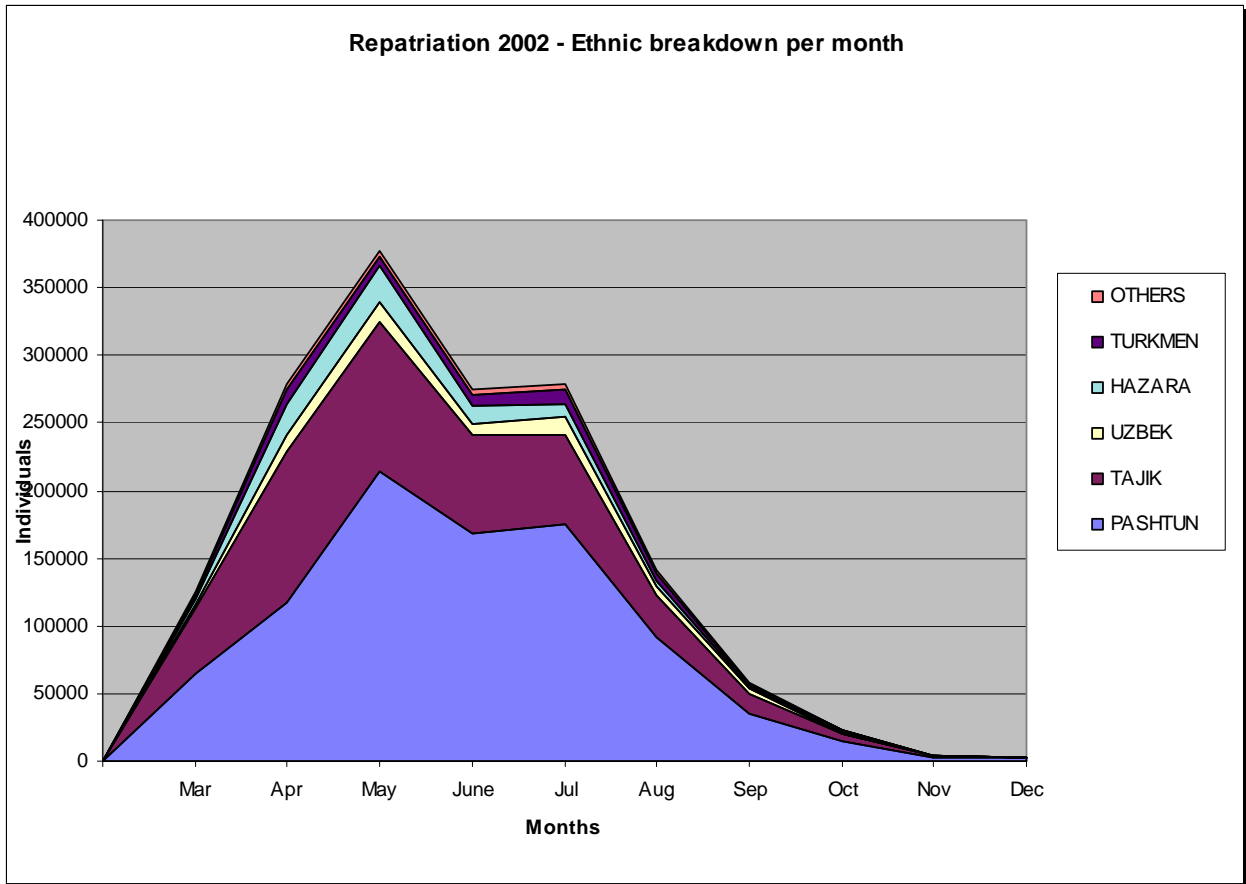
2002 - Gender Percentage

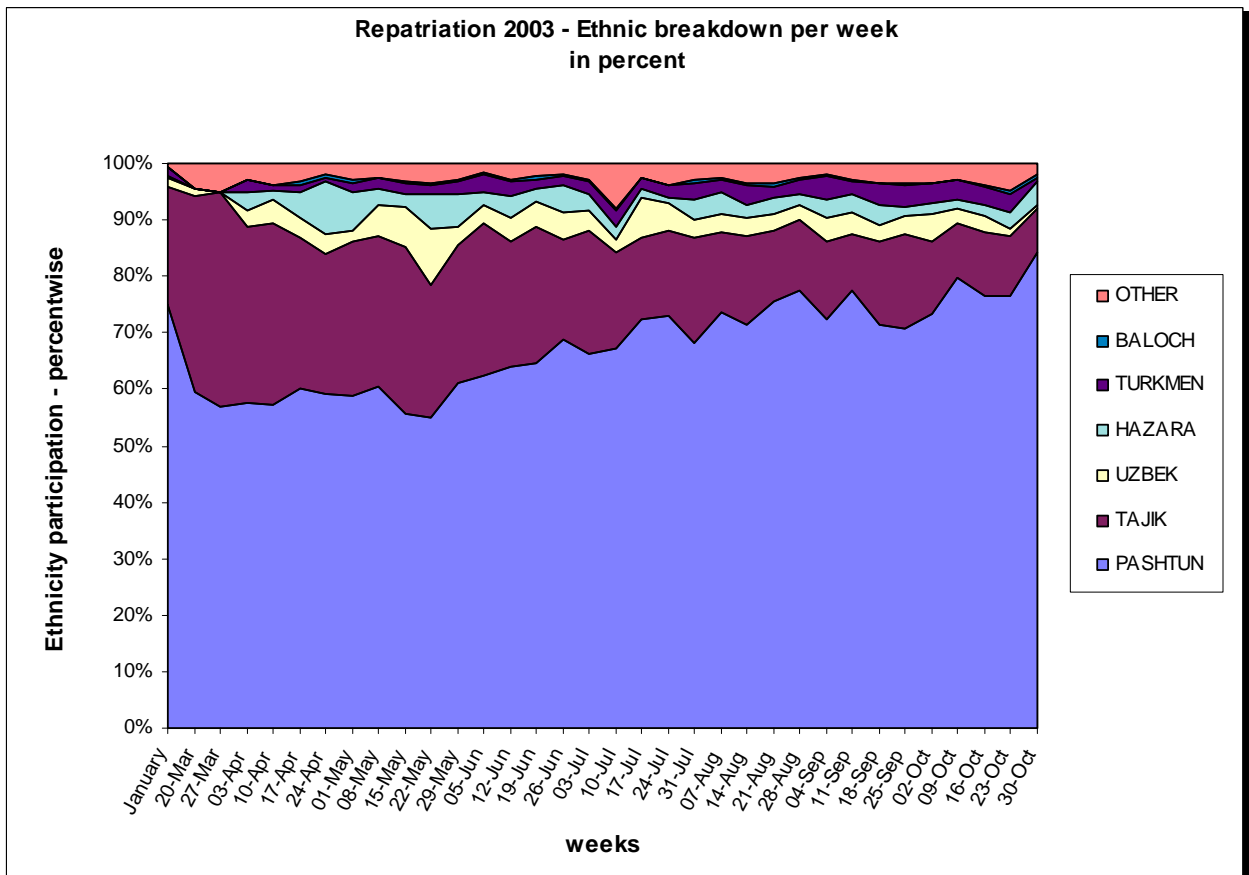
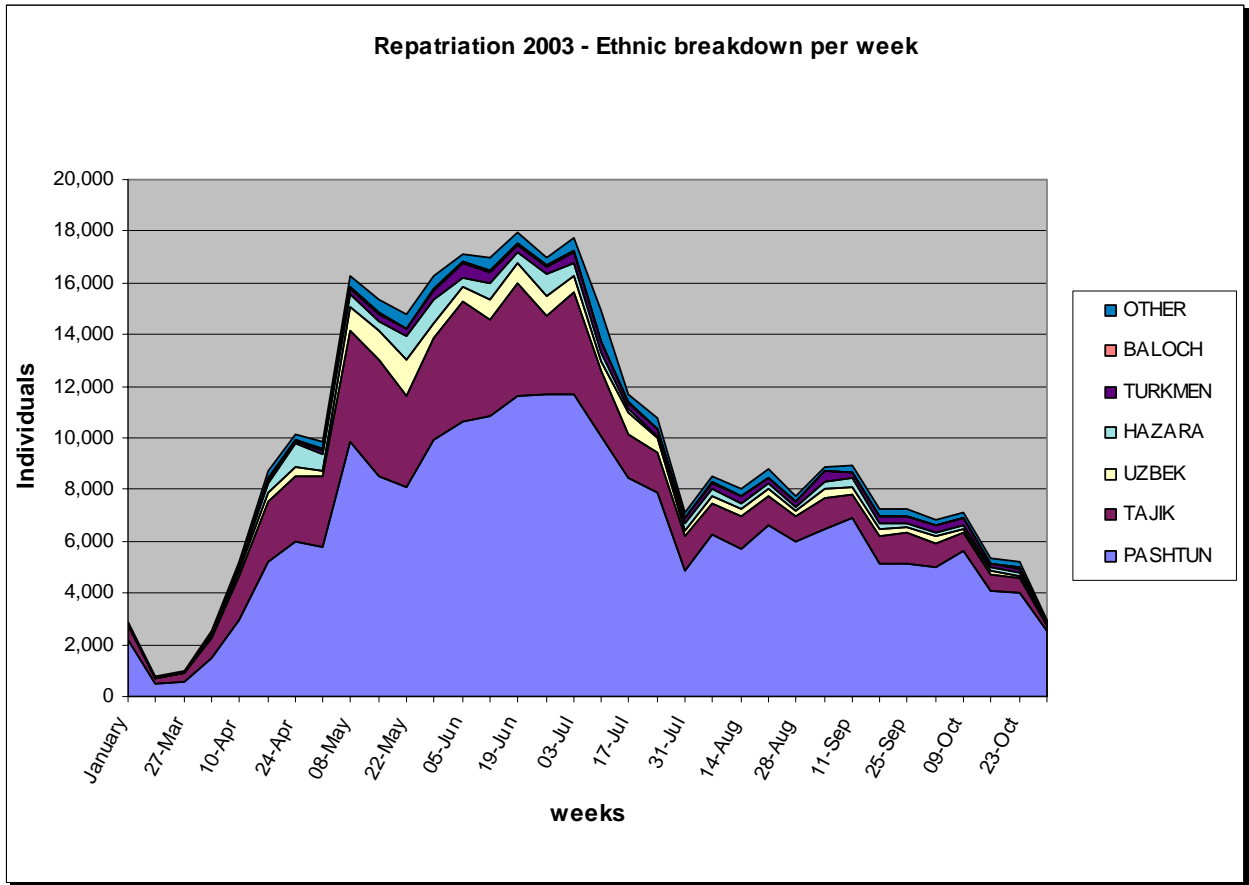


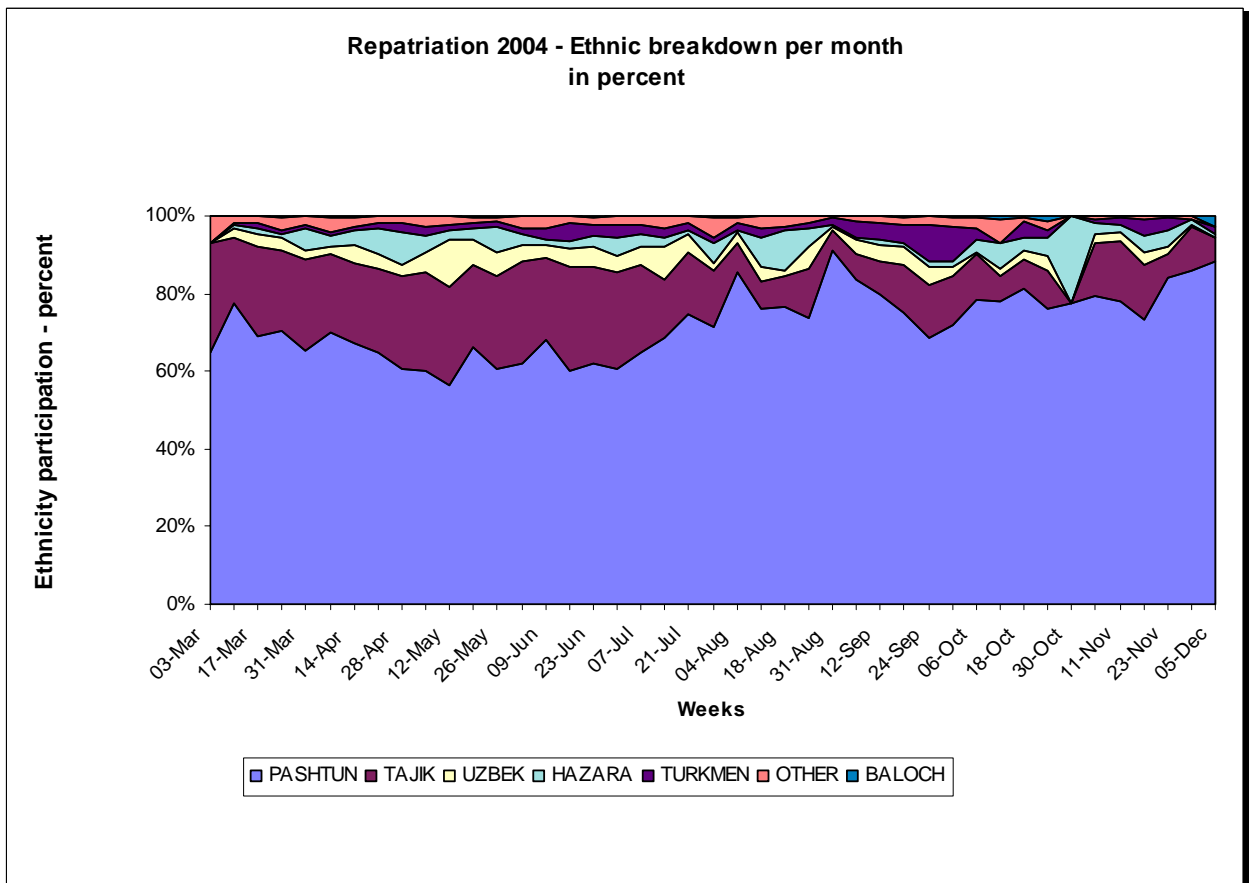
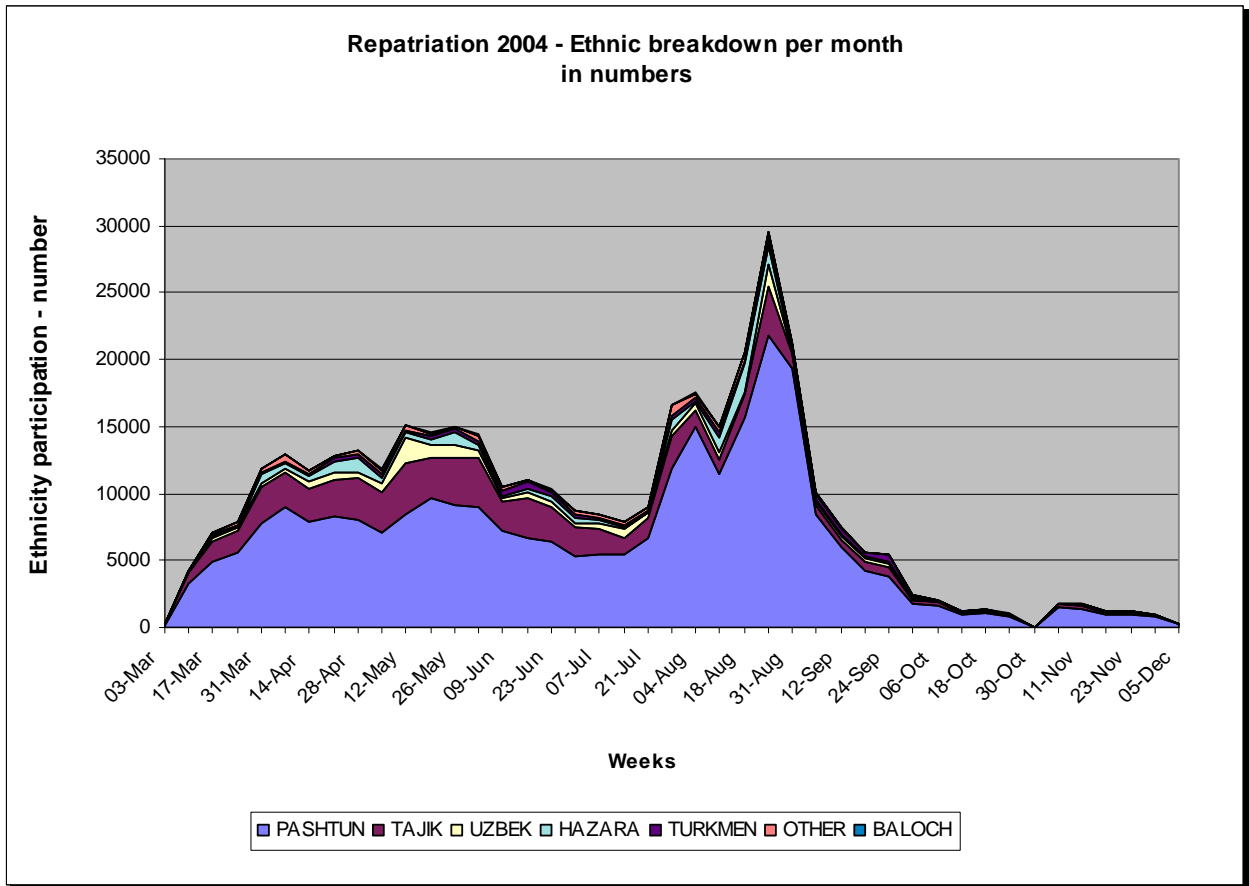
2002 - Ethnicity in Percent



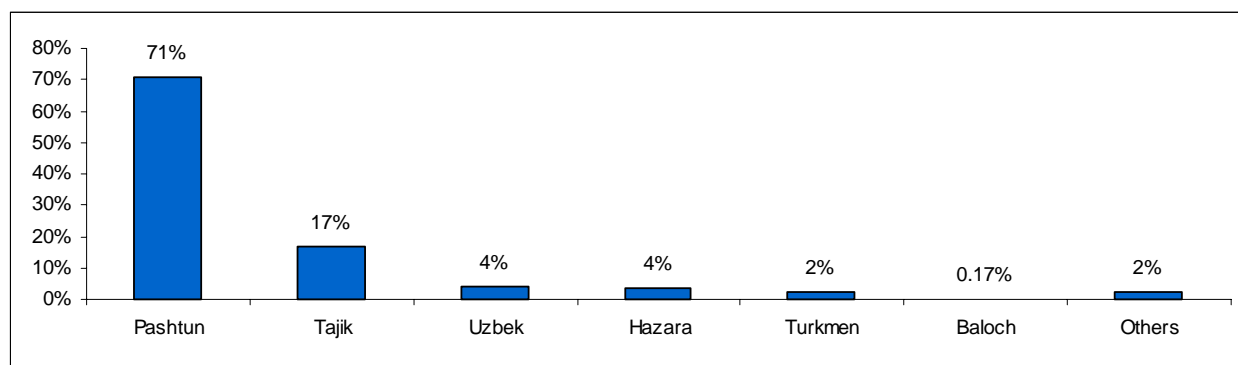
➤ **Ethnic breakdown per month - in comparison with 2002 and 2003**







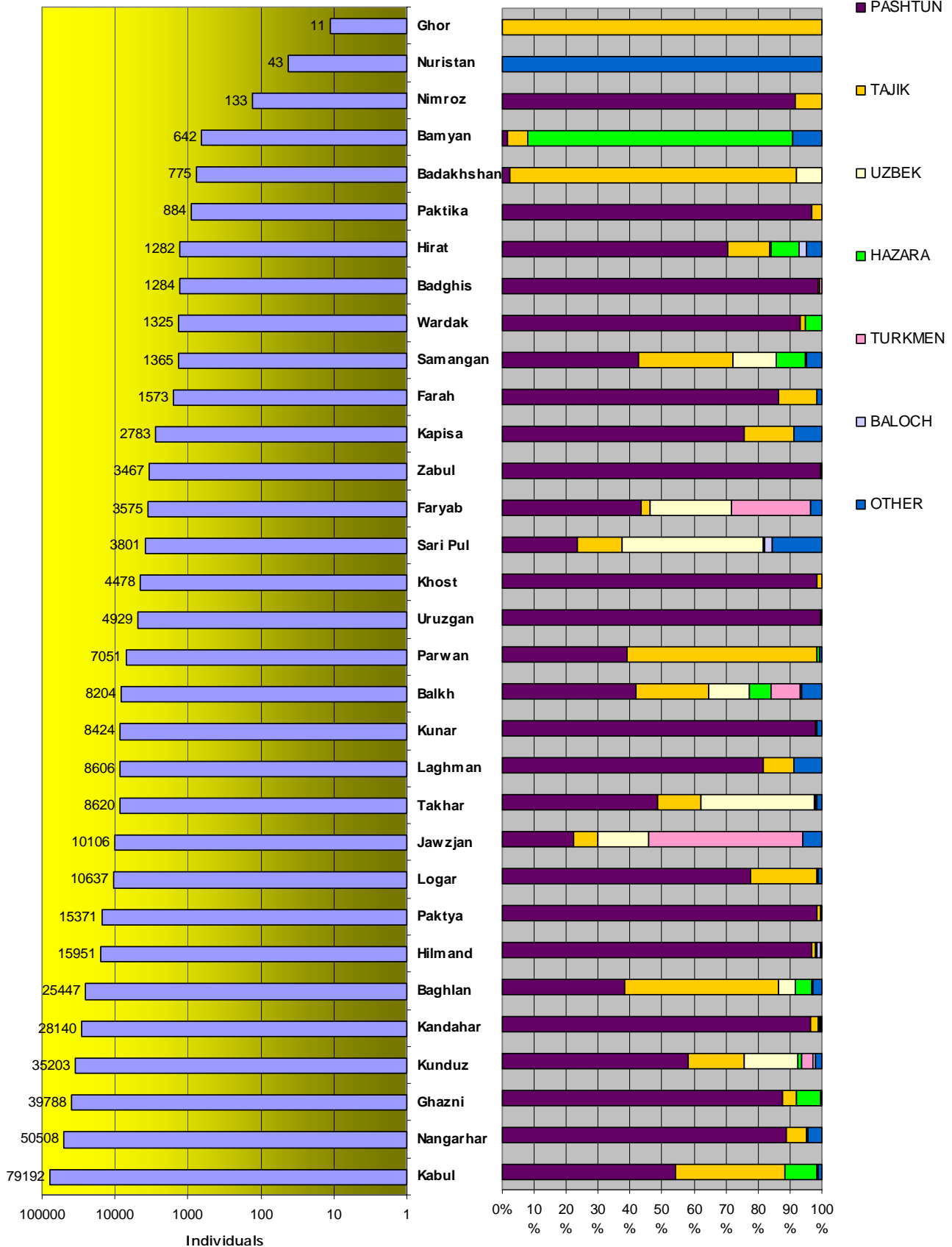
## 6. ETHNICITY AND PROVINCE OF INTENDED FINAL DESTINATION



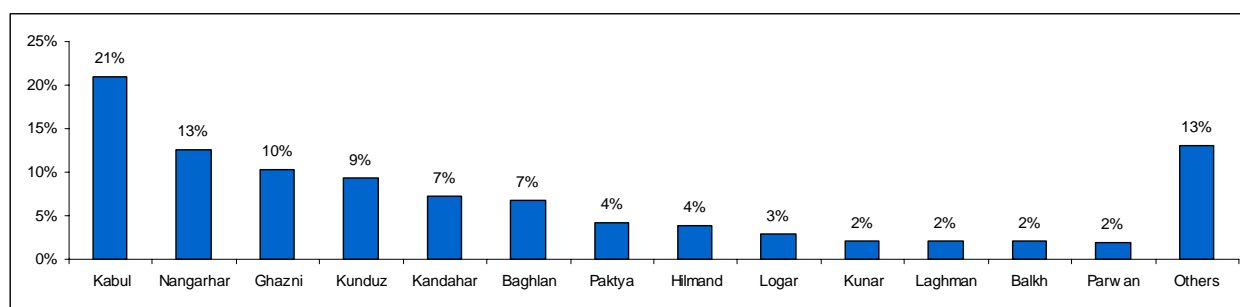
	Pashtun	Tajik	Uzbek	Hazara	Turkmen	Baloch	Others	Total	%
<b>EASTERN</b>	<b>80,598</b>	<b>4,370</b>	<b>8</b>	<b>40</b>	<b>0</b>	<b>0</b>	<b>3,298</b>	<b>88,314</b>	<b>23.02</b>
Kunar	8,242	44	-	3	-	-	135	8,424	2.20
Khost	4,406	67	-	-	-	-	5	4,478	1.17
Laghman	7,029	815	-	-	-	-	762	8,606	2.24
Nangarhar	44,920	3,269	8	-	-	-	2,311	50,508	13.17
Nuristan	-	-	-	-	-	-	43	43	0.01
Paktika	855	29	-	-	-	-	-	884	0.23
Paktya	15,146	146	-	37	-	-	42	15,371	4.01
<b>CENTRAL</b>	<b>92,196</b>	<b>35,549</b>	<b>182</b>	<b>11,518</b>	<b>164</b>	<b>27</b>	<b>1,782</b>	<b>141,418</b>	<b>36.87</b>
Bamyan	9	41	-	532	-	-	60	642	0.17
Ghazni	34,951	1,619	15	2,978	-	20	205	39,788	10.37
Kabul	42,875	27,030	167	7,878	156	7	1,079	79,192	20.64
Kapisa	2,109	434	-	-	-	-	240	2,783	0.73%
Logar	8,264	2,210	-	17	-	-	146	10,637	2.77
Parwan	2,754	4,193	-	44	8	-	52	7,051	1.84
Wardak	1,234	22	-	69	-	-	-	1,325	0.35
<b>NORTHERN</b>	<b>43,172</b>	<b>24,004</b>	<b>15,599</b>	<b>2,519</b>	<b>7,914</b>	<b>329</b>	<b>3,559</b>	<b>97,096</b>	<b>25.31</b>
Badakhshan	18	694	63	-	-	-	-	775	0.20
Baghlan	9,718	12,319	1,237	1,400	27	22	724	25,447	6.63
Balkh	3,431	1,852	1,046	553	777	17	528	8,204	2.14
Faryab	1,557	101	904	7	872	-	134	3,575	0.93
Jawzjan	2,250	772	1,595	6	4,861	-	622	10,106	2.63
Kunduz	20,536	6,150	5,851	364	1,372	178	752	35,203	9.18
Samangan	582	402	187	122	5	-	67	1,365	0.36
Sari Pul	896	527	1,676	16	-	95	591	3,801	0.99
Takhar	4,184	1,187	3,040	51	-	17	141	8,620	2.25
<b>SOUTHERN</b>	<b>51,095</b>	<b>819</b>	<b>28</b>	<b>187</b>	<b>0</b>	<b>286</b>	<b>205</b>	<b>52,620</b>	<b>13.72</b>
Hilmand	15,444	166	12	86	-	184	59	15,951	4.16
Kandahar	27,161	627	16	88	-	102	146	28,140	7.34
Nimroz	122	11	-	-	-	-	-	133	0.03
Uruzgan	4,916	-	-	13	-	-	-	4,929	1.28
Zabul	3,452	15	-	-	-	-	-	3,467	0.90
<b>WESTERN</b>	<b>3,531</b>	<b>375</b>	<b>8</b>	<b>112</b>	<b>11</b>	<b>27</b>	<b>86</b>	<b>4,150</b>	<b>1.08</b>
Badghis	1,267	5	1	-	11	-	-	1,284	0.33
Farah	1,359	191	-	-	-	-	23	1,573	0.41
Ghor	-	11	-	-	-	-	-	11	0.00
Hirat	905	168	7	112	-	27	63	1,282	0.33
<b>Total</b>	<b>270,592</b>	<b>65,117</b>	<b>15,825</b>	<b>14,376</b>	<b>8,089</b>	<b>669</b>	<b>8,930</b>	<b>383,598</b>	<b>100</b>
<b>%</b>	<b>71%</b>	<b>17%</b>	<b>4%</b>	<b>4%</b>	<b>2%</b>	<b>0.17%</b>	<b>2%</b>	<b>100%</b>	

2004 - Returnees per province of return

Ethnic breakdown in percent



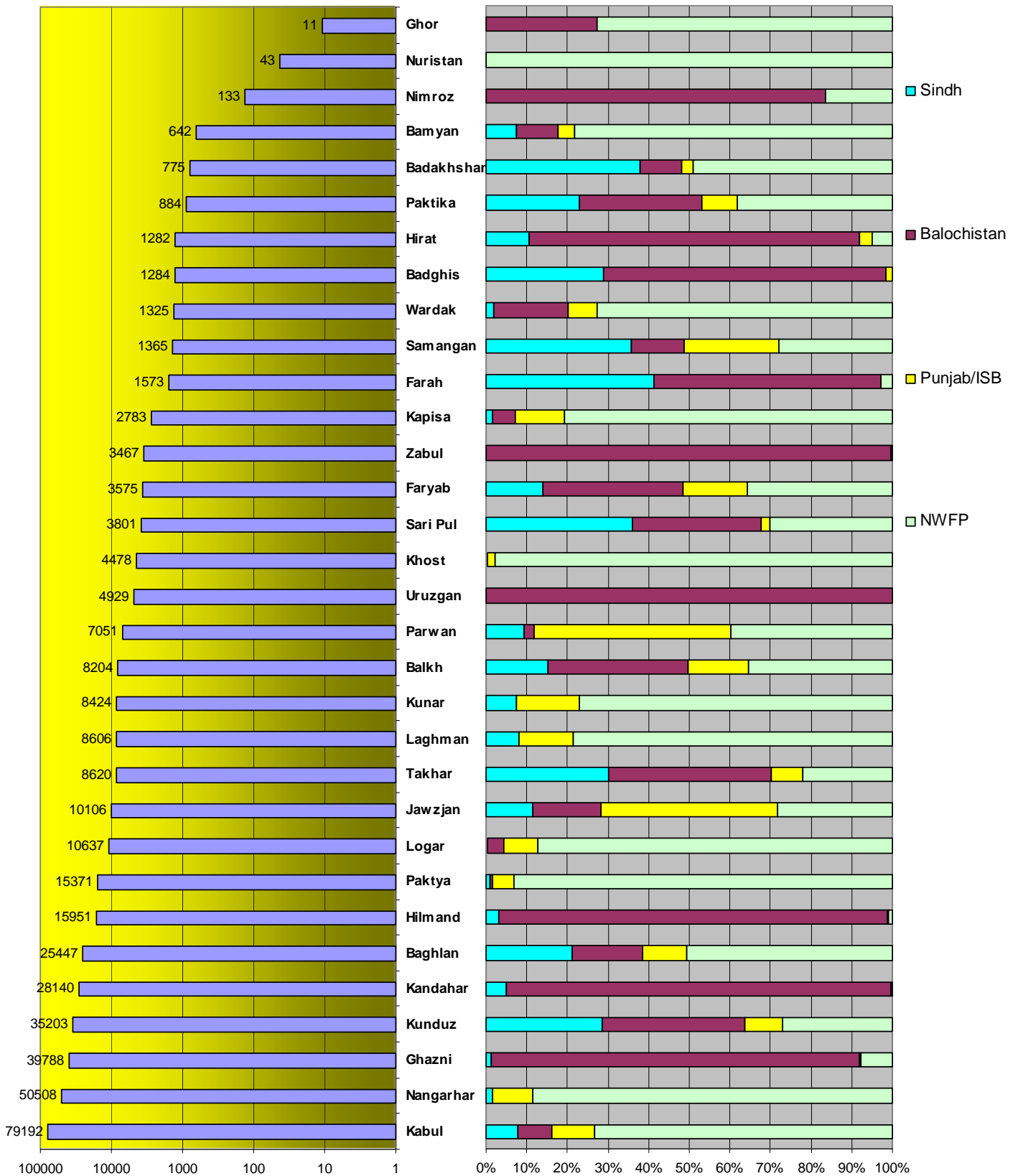
## 7. PROVINCE OF DEPARTURE AND RETURN



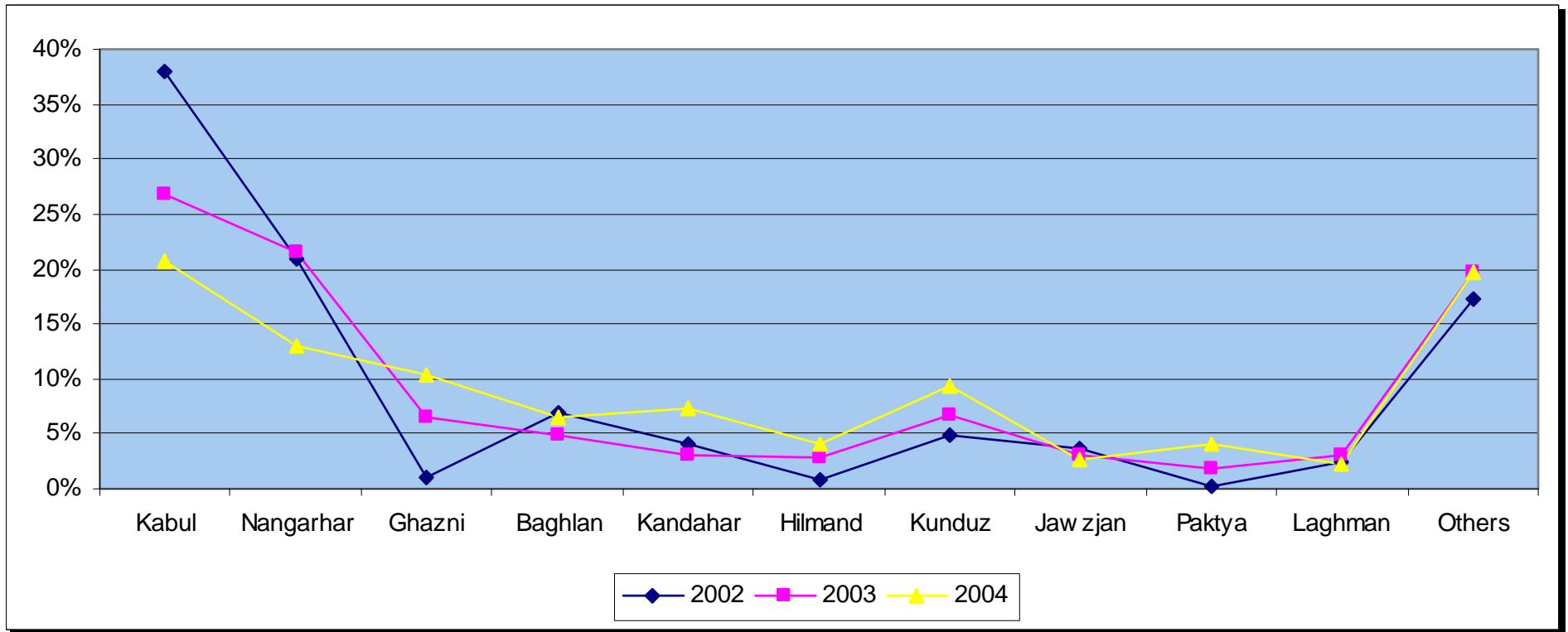
	NWFP		Sindh		Balochistan		Punjab/Islamabad		Total		%
	Fam	Ind	Fam	Ind	Fam	Ind	Fam	Ind	Fam	Ind	
<b>EASTERN</b>	<b>12,701</b>	<b>77,036</b>	<b>419</b>	<b>2,445</b>	<b>68</b>	<b>398</b>	<b>1,408</b>	<b>8,435</b>	<b>14,596</b>	<b>88,314</b>	<b>23.02</b>
Kunar	956	6,476	105	622	-	-	228	1,326	1,289	8,424	2.20
Khost	792	4,386	4	17	-	-	13	75	809	4,478	1.17
Laghman	1,118	6,756	124	687	-	-	202	1,163	1,444	8,606	2.24
Nangarhar	7,352	44,707	129	772	10	54	819	4,975	8,310	50,508	13.17
Nuristan	7	43	-	-	-	-	-	-	7	43	0.01
Paktika	57	339	31	202	44	267	12	76	144	884	0.23
Paktya	2,419	14,329	26	145	14	77	134	820	2,593	15,371	4.01
<b>CENTRAL</b>	<b>13,590</b>	<b>77,109</b>	<b>1,481</b>	<b>7,482</b>	<b>7,030</b>	<b>43,707</b>	<b>2,315</b>	<b>13,120</b>	<b>24,416</b>	<b>141,418</b>	<b>36.87</b>
Bamyan	88	502	9	48	14	65	4	27	115	642	0.17
Ghazni	540	3,150	79	451	5,606	36,135	9	52	6,234	39,788	10.37
Kabul	10,305	58,156	1,235	6,217	1,241	6,530	1,513	8,289	14,294	79,192	20.64
Kapisa	346	2,243	12	47	21	153	55	340	434	2,783	0.73
Logar	1,667	9,283	6	27	78	420	159	907	1,910	10,637	2.77
Parwan	488	2,813	134	667	27	163	558	3,408	1,207	7,051	1.84
Wardak	156	962	6	25	43	241	17	97	222	1,325	0.35
<b>NORTHERN</b>	<b>5,972</b>	<b>33,295</b>	<b>4,495</b>	<b>23,060</b>	<b>5,017</b>	<b>27,469</b>	<b>2,415</b>	<b>13,272</b>	<b>17,899</b>	<b>97,096</b>	<b>25.31</b>
Badakhshan	73	381	56	294	14	78	6	22	149	775	0.20
Baghlan	2,306	12,910	1,037	5,397	798	4,368	473	2,772	4,614	25,447	6.63
Balkh	554	2,910	232	1,256	526	2,821	230	1,217	1,542	8,204	2.14
Faryab	265	1,282	102	495	246	1,237	105	561	718	3,575	0.93
Jawzjan	559	2,864	252	1,147	322	1,701	857	4,394	1,990	10,106	2.63
Kunduz	1,627	9,519	1,889	10,011	2,231	12,442	560	3,231	6,307	35,203	9.18
Samangan	66	381	103	487	33	177	57	320	259	1,365	0.36
Sari Pul	210	1,144	297	1,364	252	1,215	13	78	772	3,801	0.99
Takhar	312	1,904	527	2,609	595	3,430	114	677	1,548	8,620	2.25
<b>SOUTHERN</b>	<b>56</b>	<b>305</b>	<b>334</b>	<b>1,882</b>	<b>8,964</b>	<b>50,386</b>	<b>8</b>	<b>47</b>	<b>9,362</b>	<b>52,620</b>	<b>13.72</b>
Hilmand	33	173	94	508	2,789	15,239	6	31	2,922	15,951	4.16
Kandahar	18	103	240	1,374	4,763	26,647	2	16	5,023	28,140	7.34
Nimroz	4	22	-	-	17	111	-	-	21	133	0.03
Uruzgan	-	-	-	-	797	4,929	-	-	797	4,929	1.28
Zabul	1	7	-	-	598	3,460	-	-	599	3,467	0.90
<b>WESTERN</b>	<b>23</b>	<b>114</b>	<b>205</b>	<b>1,158</b>	<b>510</b>	<b>2,817</b>	<b>12</b>	<b>61</b>	<b>750</b>	<b>4,150</b>	<b>1.08</b>
Badghis	-	-	69	370	185	894	4	20	258	1,284	0.33
Farah	10	44	109	651	140	878	-	-	259	1,573	0.41
Ghor	1	8	-	-	1	3	-	-	2	11	0.00
Hirat	12	62	27	137	184	1,042	8	41	231	1,282	0.33
<b>Total</b>	<b>32,342</b>	<b>187,859</b>	<b>6,934</b>	<b>36,027</b>	<b>21,589</b>	<b>124,777</b>	<b>6,158</b>	<b>34,935</b>	<b>67,023</b>	<b>383,598</b>	<b>100</b>

2004 - Number of returnees per province of return

Province of registration



### 2004 - Top ten Provinces of Return in Comparison to 2002 and 2003



## 8. MONTHLY AGE BREAKDOWN OF RETURNEES

Comparison of age breakdown between 2002, 2003 & 2004

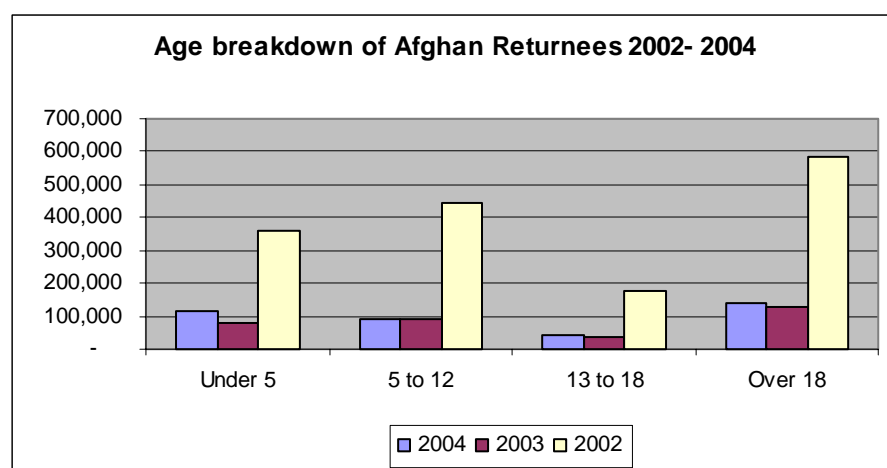
2004 - Age breakdown													
Age	Jan	Feb	Mar	Apr	May	Jun	Jul	Aug	Sep	Oct	Nov	Dec	Total
5 Under	-	-	8,781	15,083	17,762	13,119	12,980	30,826	12,560	1,832	1,560	1,397	115,900
5 To 12	-	-	6,761	11,606	13,754	10,917	10,480	23,456	8,223	1,327	1,111	935	88,570
13To18	-	-	3,211	5,933	7,036	5,730	4,534	9,284	3,082	608	538	431	40,387
18Over	-	-	10,984	19,952	23,788	18,174	15,155	32,220	12,848	2,185	1,809	1,626	138,741
<b>Total</b>	-	-	<b>29,737</b>	<b>52,574</b>	<b>62,340</b>	<b>47,940</b>	<b>43,149</b>	<b>95,786</b>	<b>36,713</b>	<b>5,952</b>	<b>5,018</b>	<b>4,389</b>	<b>383,598</b>

2003 - Age breakdown													
Age	Jan	Feb	Mar	Apr	May	Jun	Jul	Aug	Sep	Oct	Nov	Dec	Total
5 Under	703	-	695	8288	14792	18083	13773	8820	8843	6207	1019	-	81223
5 To 12	742	-	693	9071	15829	20728	15728	9390	9293	5905	986	-	88365
13To18	322	-	336	4434	7476	8651	6116	3847	3624	2541	435	-	37782
18Over	1096	-	1010	13963	24598	28307	19787	12925	12776	8954	1531	-	124947
<b>Total</b>	<b>2,863</b>	-	<b>2,734</b>	<b>35,756</b>	<b>62,695</b>	<b>75,769</b>	<b>55,404</b>	<b>34,982</b>	<b>34,536</b>	<b>23,607</b>	<b>3,971</b>	-	<b>332,317</b>

Total 10,757 Refugees repatriated from Chaman waiting area are not included in 2003 breakdown

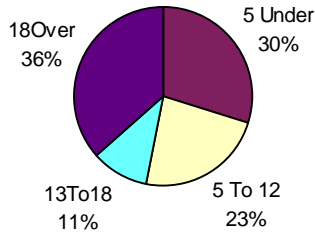
2002 - Age breakdown													
Age	Jan	Feb	Mar	Apr	May	Jun	Jul	Aug	Sep	Oct	Nov	Dec	Total
Under 5	-	-	30,444	63,393	88,067	61,563	63,222	33,923	13,788	5,429	981	834	361,644
5 to 12	-	-	32,922	72,943	103,784	79,263	84,855	44,697	17,509	6,664	1,076	817	444,530
13 to 18	-	-	13,381	32,875	40,954	31,195	32,501	15,993	6,568	2,445	432	367	176,711
Over 18	-	-	48,067	109,630	144,746	102,485	99,114	47,373	20,051	8,051	1,461	1,232	582,210
<b>Total</b>	-	-	<b>124,814</b>	<b>278,841</b>	<b>377,551</b>	<b>274,506</b>	<b>279,692</b>	<b>141,986</b>	<b>57,916</b>	<b>22,589</b>	<b>3,950</b>	<b>3,250</b>	<b>1,565,095</b>

Summary of Age breakdown from 2002 to 2004				
Age	2004	2003	2002	Total
Under 5	115,900	81,223	361,644	558,767
5 to 12	88,570	88,365	444,530	621,465
13 to 18	40,387	37,782	176,711	254,880
Over 18	138,741	124,947	582,210	845,898
<b>Total</b>	<b>383,598</b>	<b>332,317</b>	<b>1,565,095</b>	<b>2,281,010</b>

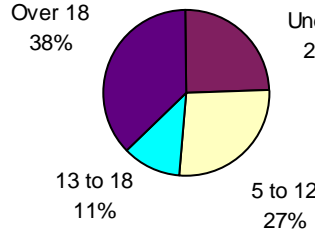


The medium age of the returnees for both 2002 and 2003 up to August is around 12. As can be seen from the graphs on the left the age composition of the returnees in 2004 as compared to 2003 and 02

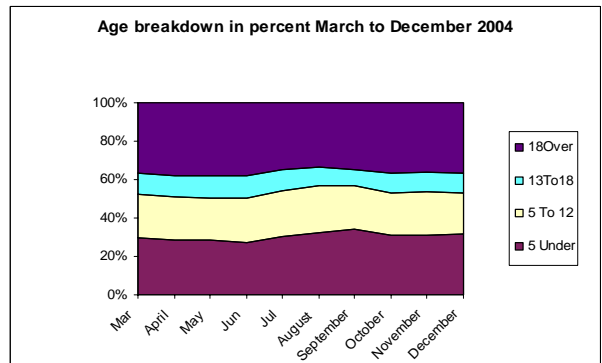
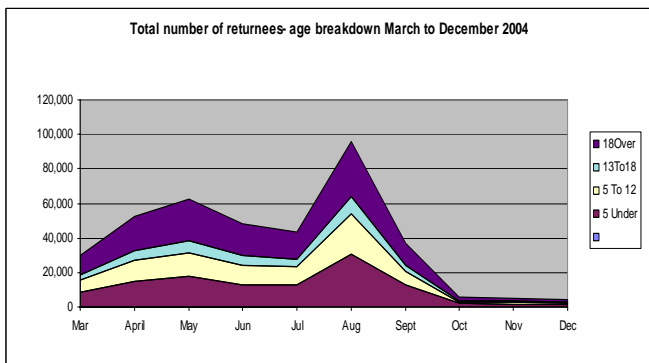
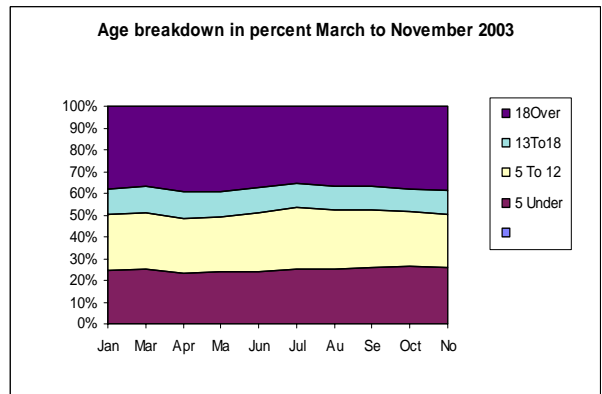
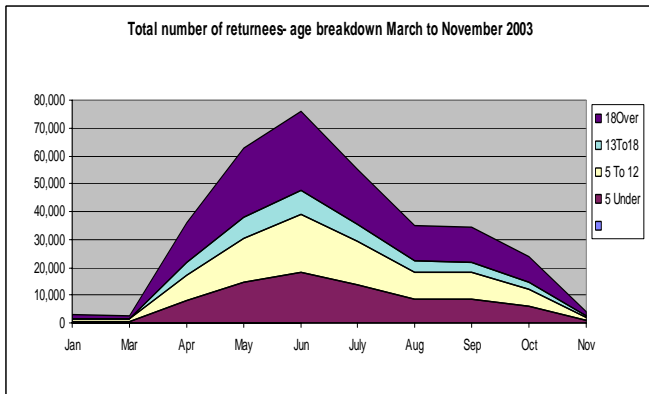
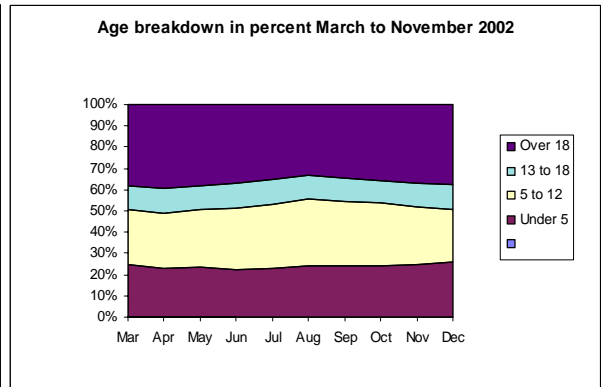
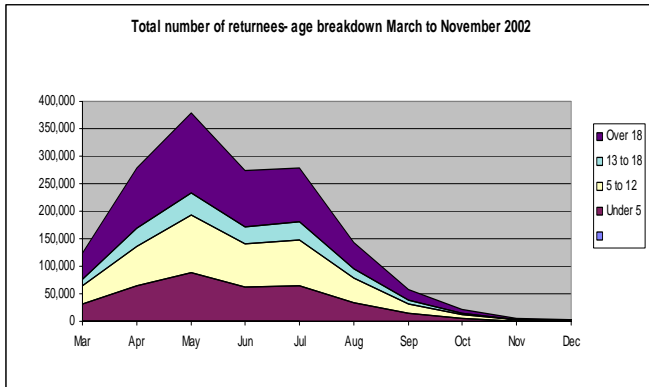
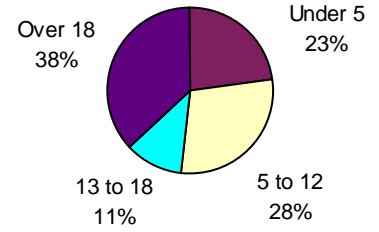
**2004**



**2003**

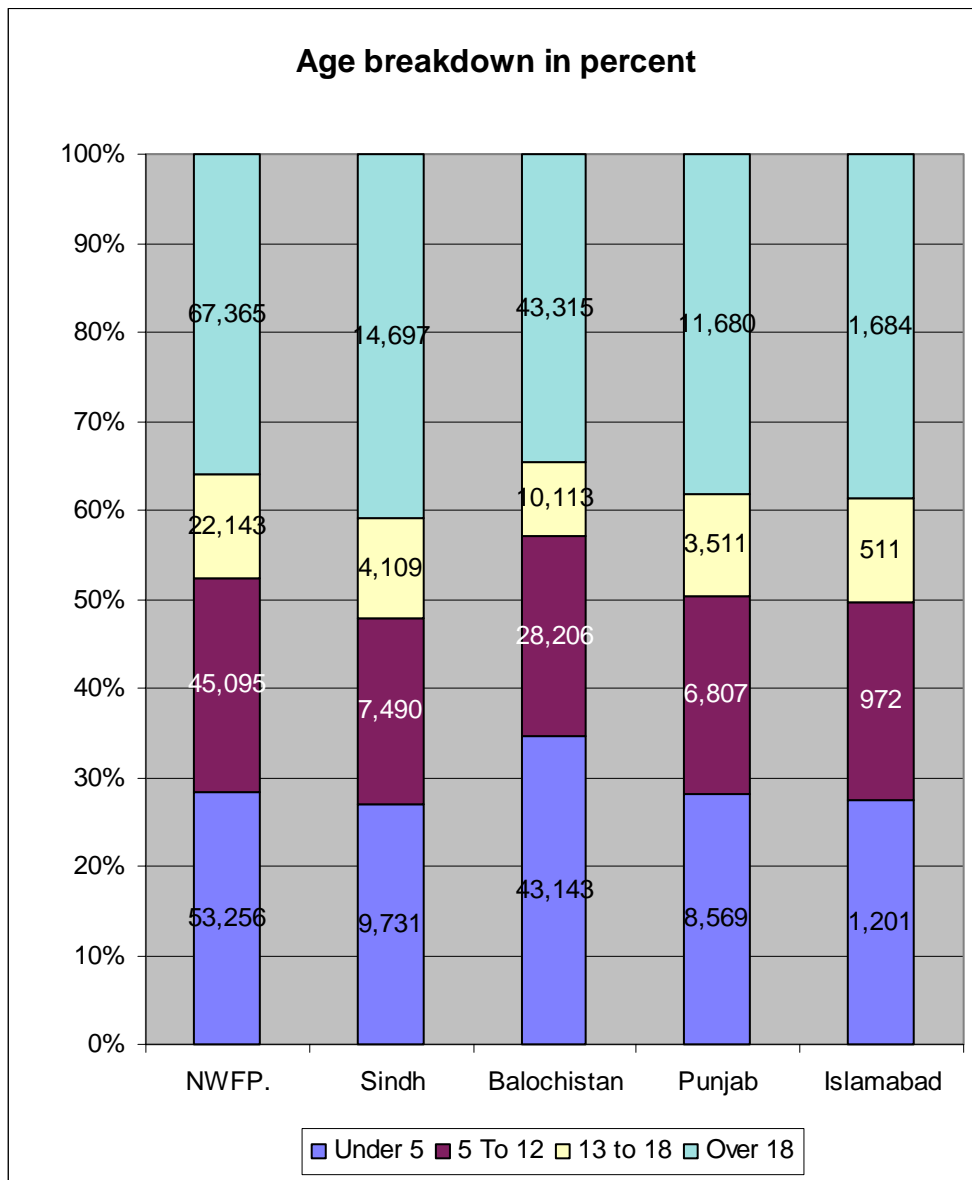


**2002**



### Age Breakdown by Province of Residence

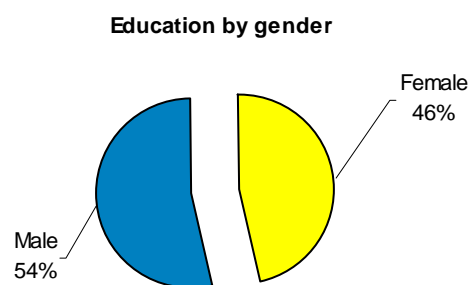
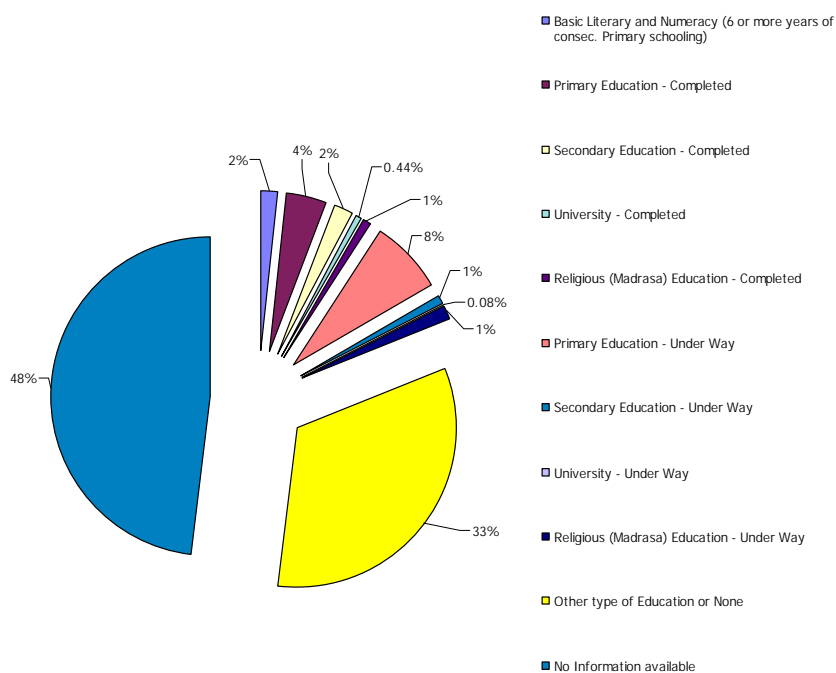
Age	NWFP	Sindh	Balochistan	Punjab	Islamabad	Total
Under 5	53,256	9,731	43,143	8,569	1,201	115,900
5 To 12	45,095	7,490	28,206	6,807	972	88,570
13 to 18	22,143	4,109	10,113	3,511	511	40,387
Over 18	67,365	14,697	43,315	11,680	1,684	138,741
<b>Total</b>	<b>187,859</b>	<b>36,027</b>	<b>124,777</b>	<b>30,567</b>	<b>4,368</b>	<b>383,598</b>



## 9. EDUCATION

### ➤ Breakdown of returnees by education completed or underway (01 March – 31 December 2004)

Education Description	Female	Male	Returnees	in % to total	in % to age group:	
Basic Literary and Numeracy (6 or more years of consec. Primary schooling)	1,607	4,591	6,198	2%	3%	over 13
Primary Education - Completed	4,478	12,214	16,692	4%	9%	over 13
Secondary Education - Completed	1,740	5,687	7,427	2%	5%	over 18
University - Completed	273	1,417	1,690	0%	1%	over 18
Religious (Madrassa) Education - Completed	1,037	2,139	3,176	1%	2%	over 13
Primary Education - Under Way	9,054	19,853	28,907	8%	33%	5 to 12
Secondary Education - Under Way	850	2,357	3,207	1%	8%	13 to 18
University - Under Way	74	243	317	0.1%	0.2%	over 18
Religious (Madrassa) Education - Under Way	1,474	2,853	4,327	1%	3.3%	5 to 18
Other type of Education or None	71,980	55,733	127,713	33%	47.6%	over 5
No Information available	-	-	183,944	48%	-	-
<b>in a total of</b>	-	-	<b>383,598</b>	-	-	-



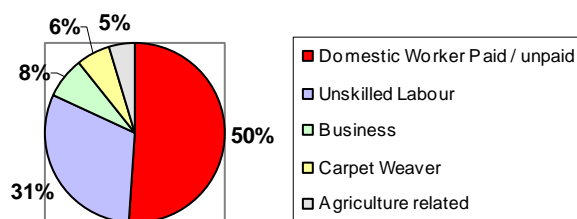
**10. OCCUPATIONAL GROUPS FOR RETURNEES BY AGE**

Skills	Age breakdown			
	5 Under	5 to 12	12 to 18	18 Over
A - Agriculture General	6	12	57	1,769
A - Agriculture Share Cropper	-	5	28	651
A- Farmer	6	16	121	3,468
A-Shepherd	1	2	18	259
Artisan	3	82	490	855
B - Business Food	5	44	313	2,572
B - Business Non Food	3	106	904	5,858
B - Business Owner	-	-	5	78
B - Business Shop Owner	-	1	28	523
C - Construction Carpenter	-	7	61	476
C - Construction General	2	14	43	409
C - Construction Mason	-	3	21	460
C - Construction Plumber	-	2	1	32
Carpet Weaver	103	1,667	2,278	4,134
D - Domestic Worker Paid	2	44	86	714
D - Domestic Worker Unpaid	139	1,801	7,636	60,234
Driver	5	-	69	2,328
E - Engineer Civil	-	-	3	95
E - Engineer Computer	-	-	9	28
E - Engineer Electrical	1	-	28	212
E - Engineer Mechanic	2	23	207	774
Education Profession	3	-	47	1,547
Legal Profession	-	-	1	28
M - Medical CHW	-	-	4	118
M - Medical Doctor	-	-	1	155
M - Medical Nurse	-	-	2	73
M - Medical Other	-	-	2	62
O - Office Skills (Govt)	4	1	16	1,115
O - Office Skills (Non Govt)	-	1	11	208
Other	15	43	43	293
Religious	4	10	38	591
S - Security Civilian	1	6	10	322
S - Security Military	-	-	8	278
Unskilled Labour	48	1,333	6,118	34,924
Unknown	115,547	83,347	21,680	13,098
<b>Total</b>	<b>115,900</b>	<b>88,570</b>	<b>40,387</b>	<b>138,741</b>

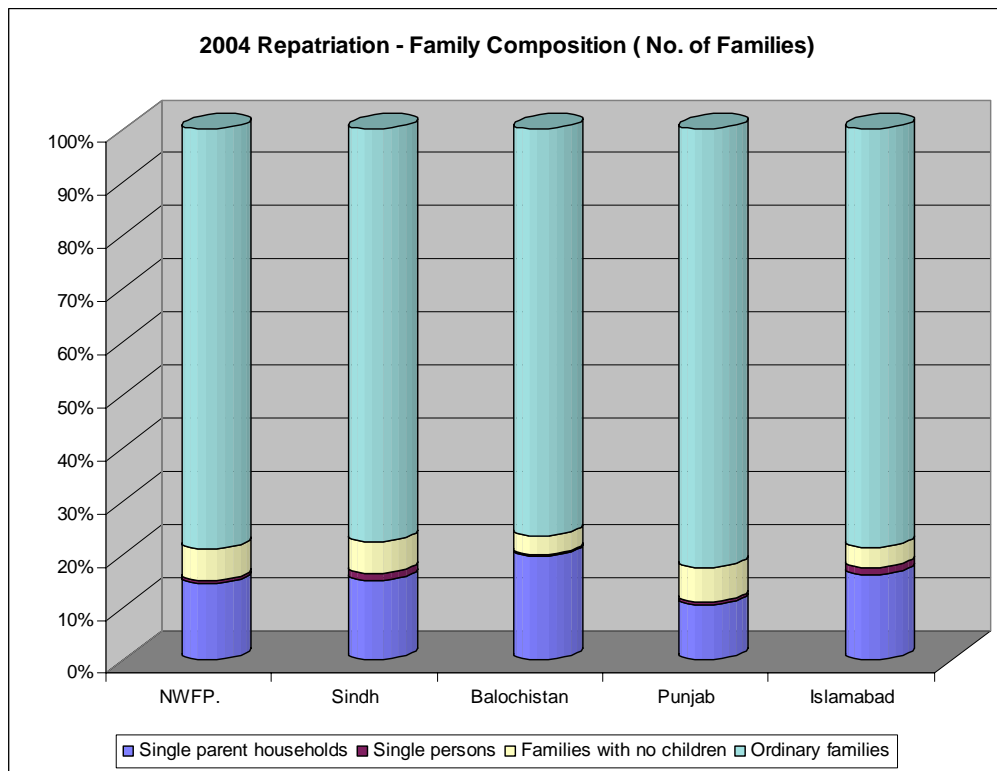
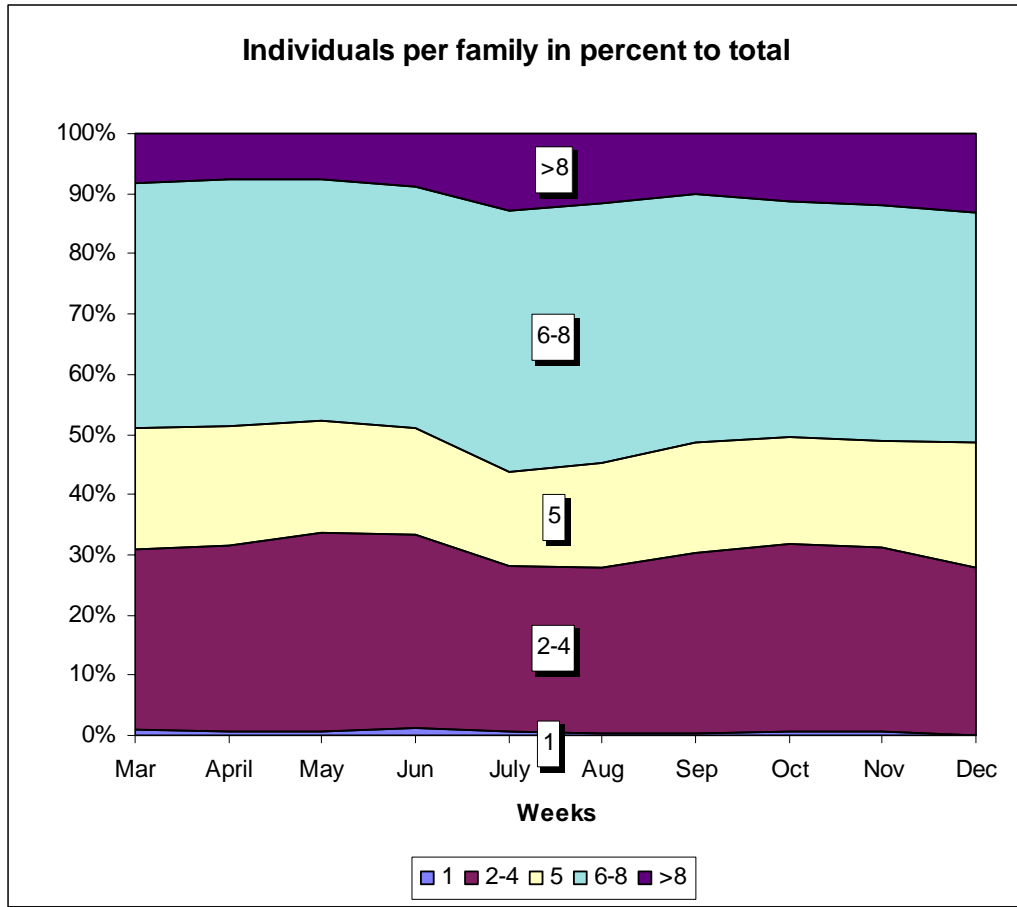
## 11. OCCUPATIONAL GROUPS OF TOTAL RETURNEES AND IN PERCENT TO AGE OVER 18

Skill	Ind	in percent to total	in percent of age group over 18	per 10,000 returnees
A - Agriculture General	1,844	0.48%	1.34%	79
A - Agriculture Share Cropper	684	0.18%	0.50%	29
A- Farmer	3,611	0.94%	2.61%	155
A-Shepherd	280	0.07%	0.20%	12
Artisan	1,430	0.37%	1.04%	61
B - Business Food	2,934	0.76%	2.12%	126
B - Business Non Food	6,871	1.79%	4.98%	294
B - Business Owner	83	0.02%	0.06%	4
B - Business Shop Owner	552	0.14%	0.40%	24
C - Construction Carpenter	544	0.14%	0.39%	23
C - Construction General	468	0.12%	0.34%	20
C - Construction Mason	484	0.13%	0.35%	21
C - Construction Plumber	35	0.01%	0.03%	1
Carpet Weaver	8,182	2.13%	5.92%	350
D - Domestic Worker Paid	846	0.22%	0.61%	36
D - Domestic Worker Unpaid	69,810	18.20%	50.55%	2,988
Driver	2,402	0.63%	1.74%	103
E - Engineer Civil	98	0.03%	0.07%	4
E - Engineer Computer	37	0.01%	0.03%	2
E - Engineer Electrical	241	0.06%	0.17%	10
E - Engineer Mechanic	1,006	0.26%	0.73%	43
Education Profession	1,597	0.42%	1.16%	68
Legal Profession	29	0.01%	0.02%	1
M - Medical CHW	122	0.03%	0.09%	5
M - Medical Doctor	156	0.04%	0.11%	7
M - Medical Nurse	75	0.02%	0.05%	3
M - Medical Other	64	0.02%	0.05%	3
O - Office Skills (Govt)	1,136	0.30%	0.82%	49
O - Office Skills (Non Govt)	220	0.06%	0.16%	9
Other	394	0.10%	0.29%	17
Religious	643	0.17%	0.47%	28
S - Security Civilian	339	0.09%	0.25%	15
S - Security Military	286	0.07%	0.21%	12
Unskilled Labour	42,423	11.06%	30.72%	1,815
No data	233,672	-	-	-
<b>Total</b>	<b>383,598</b>	<b>100.00%</b>	<b>-</b>	<b>-</b>

Top five Occupational groups in percent

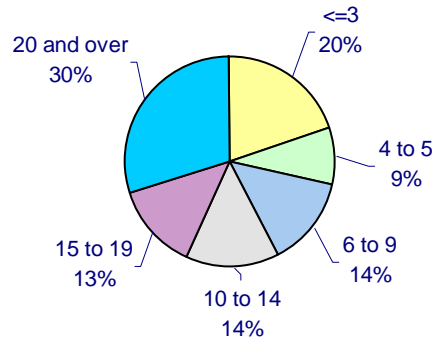


## 12. FAMILY SIZE AND COMPOSITION

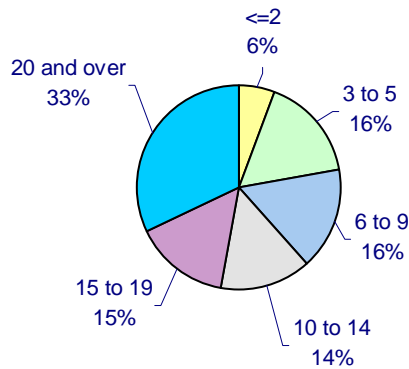


### 13. YEAR SPENT IN PAKISTAN

Returnees in 2004 - Years spent in Pakistan



Returnees in 2003 - Years spent in Pakistan



Returnees in 2002 - Years spent in Pakistan

